



TUSHAR POLYMERS

Manufacturer of High-Quality Tyre
Retreading Materials

**BONDING GUM
PRE-CURED TREAD
CONVENTIONAL TREAD**



ABOUT US

Tushar Polymers, your premier destination for high-quality tyre retreading materials.

Established in 2000, we take pride in our status as both exporter and manufacturer, catering to the needs of clients worldwide. With a dedicated team of 50+ employees, we ensure that every product meets the highest standards of quality and reliability. Under the leadership of our esteemed Founder, Rakesh Kumar Jorra, we continuously strive for excellence and customer satisfaction.

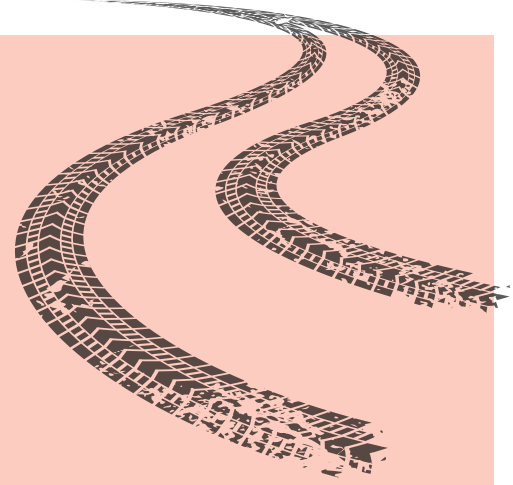
Over the years, we have built strong relationships with over 150 clients, earning their trust through our unwavering dedication to providing superior products and outstanding service.

**EXPERIENCE THE DIFFERENCE WITH TUSHAR POLYMERS
WHERE QUALITY MEETS RELIABILITY, EVERY TIME.**



TUSHAR POLYMERS

Manufacturer of High-Quality Tyre
Retreading Materials



OUR PRODUCTS

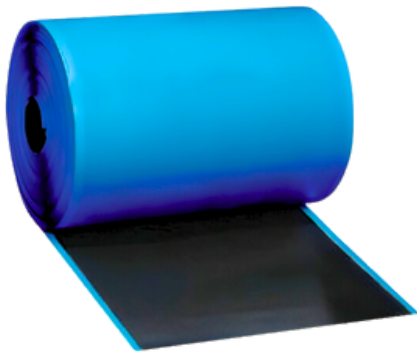


Pre-cured Treads

Made from high-mileage compounds, our treads have been accepted worldwide and tested on all types of road conditions

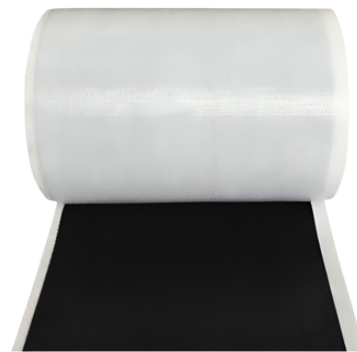
Bonding Gum

Tailored to customer needs, our gum, crafted from 100% natural rubber to enhance adhesion, is customizable in specified sizes. We offer various gum types suitable for both Precured and Hot processes, ideal for patching nail holes and mending damaged casing components.



FAST CURE 100°C

Special gum that can be used to reduce cure time. Please consult us before using.



125°C



OUR PRODUCTS

Conventional (Hot) Rubber

Enhanced scorch safety extends shelf life, with diverse compound options suitable for various applications such as Truck, Tractor, and OTR. Tailored to customer specifications, our products come in a range of sizes.



Tractor



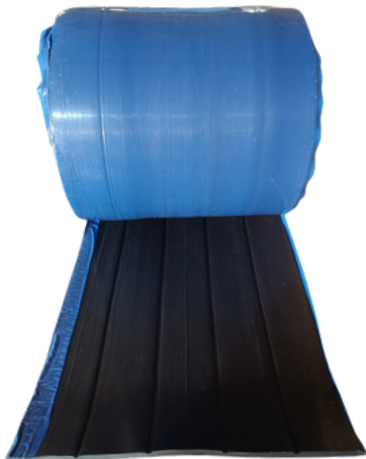
14.00 X 25



18.00 X 25



23.5 X 25



PRE-CURED TREAD RUBBER



Arawali Hills



Hi-Tech



Hunk





TP AP

Product Code	Tread Size	Base Width (mm)	Total Thickness (mm)	Length (inch)	Weight (kg)
TP 01	1000x20	205	16.5	127	10.700
TP 02	825x20	170	15.0	118	8.000
TP 03	825x16	170	15.0	106	7.000
TP 04	750x16	160	14.5	98	5.900
TP 05	750x16	150	14.5	98	5.000
TP 06	700x15	150	14.0	92	4.500
TP 07	600x16	125	13.0	87	3.700



TP AJAX

Product Code	Tread Size	Base Width (mm)	Total Thickness (mm)	Length (inch)	Weight (kg)
TP 01	1000x20	205	19	128	10.500
TP 02	900x20	187	21	126	10.400
TP 03	8x25x20	168	19	115	7.800
TP 04	8x25x16	168	19	104	6.800
TP 05	1000x20	205	16.5	127	11.000
TP 06	750x16	156	15.0	98	5.500
TP 07	900x20	187	16	124	9.500



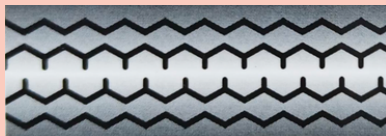
TP LA

Product Code	Tread Size	Base Width (mm)	Total Thickness (mm)	Length (inch)	Weight (kg)
TP 01	1000x20	205	17.0	127	10.800
TP 02	825x20	170	15.0	118	8.000
TP 03	825x16	170	15.0	106	7.000
TP 04	750x16	160	15.0	98	5.800



TP TITANIC

Product Code	Tread Size	Base Width (mm)	Total Thickness (mm)	Length (inch)	Weight (kg)
TP 01	1000x20	205	16.5	127	11.600
TP 02	1000x20	210	17.5	128	11.800
TP 03	1000x20	220	17.5	128	12.500
TP 04	1000x20	230	18	132	14



TP RIB

Product Code	Tread Size	Base Width (mm)	Total Thickness (mm)	Length (inch)	Weight (kg)
TP 01	1000x20	205	16.5	127	10.000



TP SJE

Product Code	Tread Size	Base Width (mm)	Total Thickness (mm)	Length (inch)	Weight (kg)
TP 01	1000x20	205	16	127	10.500



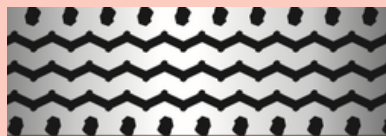
TP KH

Product Code	Tread Size	Base Width (mm)	Total Thickness (mm)	Length (inch)	Weight (kg)
TP 01	1000x20	205	15.5	127	10.700



TP ZL

Product Code	Tread Size	Base Width (mm)	Total Thickness (mm)	Length (inch)	Weight (kg)
TP 01	1000x20	205	17.5	127	11.2



TP MAX

Product Code	Tread Size	Base Width (mm)	Total Thickness (mm)	Length (inch)	Weight (kg)
TP 01	1000x20	205	17.0	127	11
TP 02	1000x20	210	16	128	12





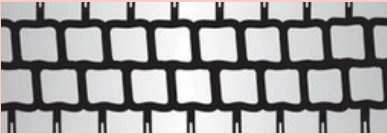
TP M-10

Product Code	Tread Size	Base Width (mm)	Total Thickness (mm)	Length (inch.)	Weight (kg)
TP 01	1000x20	210	18.0	127	11.000



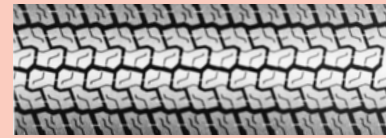
TP TFP

Product Code	Tread Size	Base Width (mm)	Total Thickness (mm)	Length (inch.)	Weight (kg)
TP 01	600x16	125	15.0	87	3.700



TP JDH

Product Code	Tread Size	Base Width (mm)	Total Thickness (mm)	Length (inch.)	Weight (kg)
TP 01	1000x20	210	16.5	127	11.200



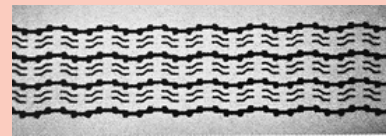
TP M-WNDR

Product Code	Tread Size	Base Width (mm)	Total Thickness (mm)	Length (inch.)	Weight (kg)
TP 01	200x15	170	13.0	87	4.300



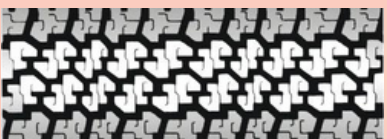
TP FT

Product Code	Tread Size	Base Width (mm)	Total Thickness (mm)	Length (inch.)	Weight (kg)
TP 01	700x15	145	13.0	90	4.400



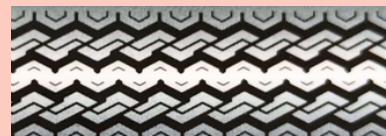
TP RB24

Product Code	Tread Size	Base Width (mm)	Total Thickness (mm)	Length (inch.)	Weight (kg)
TP 01	1000x20	210	18	127	11.200



TP BS

Product Code	Tread Size	Base Width (mm)	Total Thickness (mm)	Length (inch.)	Weight (kg)
TP 01	78x15	156	14.0	90	4.200



TP APDRA

Product Code	Tread Size	Base Width (mm)	Total Thickness (mm)	Length (inch.)	Weight (kg)
TP 01	700x15	148	13.0	90	4.400



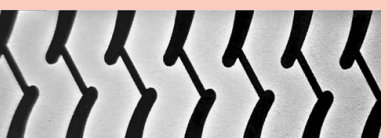
TP LD

Product Code	Tread Size	Base Width (mm)	Total Thickness (mm)	Length (inch.)	Weight (kg)
TP 01	1000x20	215	17.0	128	11.700
TP 02	1000x20	220	17.0	132	12.300
TP 03	1000x20	220	18	128	12.200



TP MINES

Product Code	Tread Size	Base Width (mm)	Total Thickness (mm)	Length (inch.)	Weight (kg)
TP 01	1000x20	210	18	127	11.800



TP TTNH

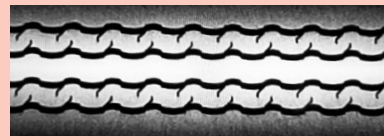
Product Code	Tread Size	Base Width (mm)	Total Thickness (mm)	Length (inch.)	Weight (kg)
TP 01	1000x20	210	19	128	14





TP TFC

Product Code	Tread Size	Base Width (mm)	Total Thickness (mm)	Length (inch.)	Weight (kg)
TP 01	600x16 (H)	128	18.0	87	4.400
TP 02	600x16	128	17.0	87	4.100
TP 03	600x16	125	16.0	87	3.200



TP M-RIB

Product Code	Tread Size	Base Width (mm)	Total Thickness (mm)	Length (inch.)	Weight (kg)
TP 01	450x12	100	12.0	128	2.100



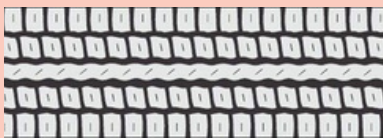
TP ROADSTAR

Product Code	Tread Size	Base Width (mm)	Total Thickness (mm)	Length (inch.)	Weight (kg)
TP 01	1000x20	205	16.5	126	10.300



TP Z-BAR

Product Code	Tread Size	Base Width (mm)	Total Thickness (mm)	Length (inch.)	Weight (kg)
TP 01	900x20	187	16.7	124	9.800



TP ASTRO

Product Code	Tread Size	Base Width (mm)	Total Thickness (mm)	Length (inch.)	Weight (kg)
TP 01	700x15	138	13	91	4.00



TP SUPERLUG

Product Code	Tread Size	Base Width (mm)	Total Thickness (mm)	Length (inch.)	Weight (kg)
TP 01	1000x20	205	19	128	12.00



TP M-RAD

Product Code	Tread Size	Base Width (mm)	Total Thickness (mm)	Length (inch.)	Weight (kg)
TP 01	145x13	125	10.5	136	3.500
TP 02	145x12	190	10.5	128	3.000



TP OPTIMA

Product Code	Tread Size	Base Width (mm)	Total Thickness (mm)	Length (inch.)	Weight (kg)
TP 01	600x16	121	13	89	3.400
TP 02	155x12D	121	13	136	5.200



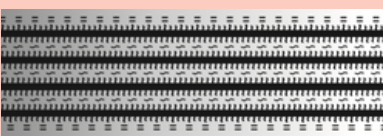
TP NDH

Product Code	Tread Size	Base Width (mm)	Total Thickness (mm)	Length (inch.)	Weight (kg)
TP 01	1000x20	220	20.2	127	11.300



TP JT

Product Code	Tread Size	Base Width (mm)	Total Thickness (mm)	Length (inch.)	Weight (kg)
TP 05	1000x20	201	16	126	9.600
TP 06	900x20	190	17.5	124	10.200



TP ZZA

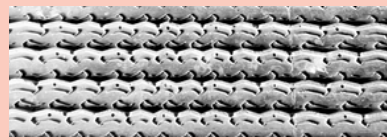
Product Code	Tread Size	Base Width (mm)	Total Thickness (mm)	Length (inch.)	Weight (kg)
TP 01	1000x20	214	21	127	11.00





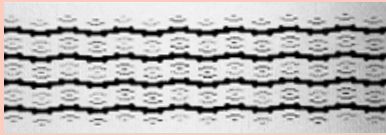
TP JTRAD

Product Code	Tread Size	Base Width (mm)	Total Thickness (mm)	Length (inch)	Weight (kg)
TP 01	145x13	125	10.5	136	3.500
TP 02	145x12	125	10.5	136	3.000



TP SW99

Product Code	Tread Size	Base Width (mm)	Total Thickness (mm)	Length (inch)	Weight (kg)
TP 01	450x12	100	9	128	1.300
TP 02	450x10	100	9	114	1.000



TP FR

Product Code	Tread Size	Base Width (mm)	Total Thickness (mm)	Length (inch)	Weight (kg)
TP 01	1000x20	220	18	128	11.600



TP ERIB

Product Code	Tread Size	Base Width (mm)	Total Thickness (mm)	Length (inch)	Weight (kg)
TP 01	4x50x12	100	12	128	1.600
TP 02	4x50x10	100	10	128	1.300



TP VIKING

Product Code	Tread Size	Base Width (mm)	Total Thickness (mm)	Length (inch)	Weight (kg)
TP 01	1000x20	187	17.0	124	9.700



TP AG

Product Code	Tread Size	Base Width (mm)	Total Thickness (mm)	Length (inch)	Weight (kg)
TP 01	1000x20	212	17	128	11.500
TP 02	1000x20	205	17	127	10



TP APM

Product Code	Tread Size	Base Width (mm)	Total Thickness (mm)	Length (inch)	Weight (kg)
TP 01	1000x20	215	17.5	128	11.800



TP VM

Product Code	Tread Size	Base Width (mm)	Total Thickness (mm)	Length (inch)	Weight (kg)
TP 01	1000x20	210	23	128	11.800
TP 02	1000x20	205	22	127	10.800



TP TRANSPORT

Product Code	Tread Size	Base Width (mm)	Total Thickness (mm)	Length (inch)	Weight (kg)
TP 01	1000x20	205	17	127	11.200



TP WSM

Product Code	Tread Size	Base Width (mm)	Total Thickness (mm)	Length (inch)	Weight (kg)
TP 01	1000x20	210	16.5	128	11.8



TP JKR

Product Code	Tread Size	Base Width (mm)	Total Thickness (mm)	Length (inch)	Weight (kg)
TP 01	1000x20	205	21.6	128	11.050





TP JTTK

Product Code	Tread Size	Base Width (mm)	Total Thickness (mm)	Length (inch.)	Weight (kg)
TP 01	900x20	187	20	126	10.0
TP 02	1000x20	205	18	127	11.5



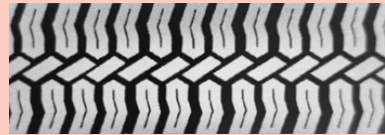
TP MRSL

Product Code	Tread Size	Base Width (mm)	Total Thickness (mm)	Length (inch.)	Weight (kg)
TP 01	1000x20	215	18	128	12.6
TP 02	1000x20	220	17	128	12
TP 03	1000x20	230	16.5	130	12.6



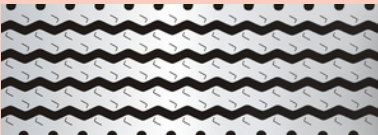
TP SLM

Product Code	Tread Size	Base Width (mm)	Total Thickness (mm)	Length (inch.)	Weight (kg)
TP 01	1000x20	205	16.3	126	10.200
TP 02	600x16	168	18	115	8
TP 03	600x16	125	15.0	87	3.700



TP SR

Product Code	Tread Size	Base Width (mm)	Total Thickness (mm)	Length (inch.)	Weight (kg)
TP 01	700x15	140	14.0	90	4.500
TP 02	900x20	187	17.7	123	10.100



TP M-11

Product Code	Tread Size	Base Width (mm)	Total Thickness (mm)	Length (inch.)	Weight (kg)
TP 01	155Dx12D	121	12	128	2
TP 02	1000x20	210	16.5	128	11.8

EXPERIENCE THE DIFFERENCE WITH TUSHAR POLYMERS
WHERE QUALITY MEETS RELIABILITY, EVERY TIME.



TUSHAR POLYMERS

Manufacturer of High-Quality Tyre
Retreading Materials





TUSHAR POLYMERS

Manufacturer of High-Quality Tyre
Retreading Materials



H-1/471, RIICO, Jhotwara Extension, Phase-2, Jaipur,
Rajasthan, 302012



tusharpolymers.com



+91 8209142602
+91 9413338225



+91 7891181493, +91 9772123730 (For Export)



tusharpolymers123@gmail.com